



THE CONSERVATORY
 OF MUSIC
FOR EVERY STAGE

2009-2010
Annual Report

Music for Every Stage



The Wisconsin Conservatory of Music's mission is best conveyed through the phrase "Music for Every Stage." It serves every age group, every level of experience, almost every musical genre, and every neighborhood in our community. Since 1899, it has provided high quality music education using the most effective teaching methods to engage and inspire every student.

As the State's largest independent non-profit community music school, the Conservatory reaches nearly 20,000 people each year through its lessons and classes, school instruction and concerts, music therapy, faculty performances, and student recitals.

Each day brings new success stories as students apply the skills learned through Conservatory programs to their schools, careers and lives: the high school voice student who received a full vocal scholarship at UW-Madison; the at-risk student who is eagerly attending school and music lessons; and the adult student who, in his 90s, found renewed energy and zest through the Conservatory's senior band program.

Praise for our Honorees

Each year during our annual meeting we choose to recognize and celebrate our outstanding partners. This year it is our pleasure to honor Berkeley Fudge and the Northwestern Mutual Foundation.



Berkeley Fudge, saxophones and flute

Celebrating 40 years of teaching at the Wisconsin Conservatory of Music, Mr. Fudge is a veteran performer who has appeared with Sonny Stitt, Lena Horne, Gene Ammons, Roland Kirk, Don Patterson, Ruth Brown, Esther Phillips, The Impressions, The O'Jays, and many more. He has served as Artist-in-Residence at Marquette University and UWM. In addition to conducting lessons, improv classes and coaching combos for the Conservatory, Berkeley teaches at MATC. He has served as the Milwaukee Jazz Experience's Director of Music Activities and an instructor for their Central City Jazz Ensemble, as well as Music Director for the YWCA Global Career Academy.

As leader of the Berkeley Fudge Quartet, he received the 2001 WAMI award for Best Traditional Jazz Performer and the 2003 Milwaukee Arts Board Outstanding Artist of the Year. Mr. Fudge is a member of We Six and can be heard on the 2005 We Six CD "Bird Say."

"Berkeley is one of my favorite musicians. He has been a mentor, inspiration, band mate, and friend for close to 40 years." – David Hazeltine, jazz pianist, WCM graduate and former faculty member



Northwestern Mutual Foundation

Northwestern Mutual Foundation is the charitable arm of the Northwestern Mutual Company, founded in 1857. Northwestern Mutual has lived through the Civil War, the Crash of 1929, the Great Depression, two world wars, several recessions and they are only 42 years older than the Conservatory! Northwestern Mutual has partnered with the Wisconsin Conservatory of Music as far back as our computerized records go (1976) and their support of our programs has had a tremendous influence on many people throughout our community.

Most recently the Foundation has supported our Music Therapy program, helping Alzheimer's patients, autistic children, and the cognitively and physically challenged. We are very grateful for their continued support and underwriting.

The Year in Review



2009-2010 was a year of challenge and incredible reward! As the recession continued, requests for our programs grew. Figuring out how to deliver high quality programs on a reduced budget required imagination and sound business solutions. How would we maintain, evaluate and improve programming in this economic climate? How could we help families who are experiencing job losses and salary reductions keep music lessons in their lives?

Finding the answers to these and other questions was not easy, yet our experiences strengthened the Conservatory as an organization and reinforced our relationships with students, faculty, parents, and school/community partners. Working together, we found new ways to do wonderful things! As a result, **we were able to keep programming in several schools and agencies that were facing drastic budget cuts.**

The winter of 2010 saw the awaited implementation of the new Jazz Institute. The palpable energy and excitement it has generated in area schools and in the music community continues to grow. In addition, despite a reduction in tuition-based students, we saw a 5% increase in the number of students served through our Conservatory Connections program, we exceeded our fundraising goals and—remarkable in the current business climate—**we achieved a balanced budget!**

The rain storms in July affected the Conservatory as they did so many others in Milwaukee. The Prospect Avenue location's lower level, including the library and recording studio, sustained damage and required new flooring. We are grateful to all the volunteers who helped pack and move the contents of the library. Luckily, insurance covered most of the expenses.

Every day is one of accomplishment at the Conservatory. Success in learning to sing or play a musical instrument is achieved through patience, hard work and cooperation. Music education provides skills adults need to navigate today's changing world and gives children the creative, social and intellectual tools to build a successful future. At the Wisconsin Conservatory of Music, we know that **music changes and improves people's lives!**

Karen Deschere
President and CEO

Building Skills for Every Stage...in Schools

Conservatory Connections

Serving individuals from age 4 months through Grade 12, the Conservatory collaborated with **34 local schools and program sites** during the year to provide progress-based music residencies of 5-30 weeks, including general music instruction, customized music programs and other initiatives that teach arts and reinforce other academic subjects. **The Conservatory is the sole or primary provider of music curriculum** in several Milwaukee schools.



“This is a good program because it tells us about history, culture and different types of instruments all in one concert. It was kind of like social studies, music, music history, cultural history, and some others all in one.”

– Burdick School Student, Age 12

All Conservatory music education programs support local, state and federal learning targets in music and other subjects. 40 Conservatory faculty members teach at Connections programs.

- Total number of pre-K children served (aged 4 months to 5 years): **367**
- Total number of children and youth served (K-12): **7,964**
- Total number of schools served: **24**
- Total number of MPS schools served: **17**
- Total number of other agency partners served: **10**
- Total number of education concerts presented: **9 for 4,086 students**

“This class is not just about playing drums, he tries to teach us life lessons.”

– Fritsche Middle School Student, Age 13



Milwaukee Public School District (MPS) is the Conservatory's largest education partner. 76% of all students served through the Conservatory Connections program attended an MPS school. Parents and families are essential components of Conservatory Connections, attending student performances and becoming active participants in their child's music education.

Conservatory Connections school and agency partners include:
(8,331 students served; 6,036 attended MPS, a 5% increase over last year)

Brookfield Academy
Civic Music Association
Roger and Leona Fitzimonds Boys & Girls Club
Gathering on the Green
Bruce Guadalupe Middle School/Latino Arts
Darryl L. Hines Academy
Thomas Jefferson Middle School
Longfellow Middle School
Malaika Early Learning Center
Maple Dale School
Milwaukee Jewish Day School
MPS Academy of Accelerated Learning
MPS Audubon Middle School
MPS Luther Burbank School
MPS Engleburg School
MPS Forest Home Avenue School
MPS Fritsche Middle School
MPS Garland Elementary School
MPS Hi-Mount Community School
MPS Rufus King I.B. High School
MPS Lincoln Middle School
MPS Milwaukee High School of the Arts
MPS Samuel Morse Middle School
MPS Ronald W. Reagan High School
MPS Roosevelt Middle School
MPS Tippecanoe School for the Arts and Humanities
MPS Wisconsin Conservatory of Lifelong Learning
Neighborhood House
North Division High School Boys & Girls Club
RUACH
Safezone Community Art Center
UPAF/Visions Campaign
Urban Day School
Sharon Lynne Wilson Center for the Arts



In Our Community

Early Childhood Music Education

We launched our community-based Early Childhood Music Education program in the fall of 2008 at three Milwaukee childcare centers: **Malaika Early Learning Center, Neighborhood House** and **Urban Day Head Start Program**. In 2009-2010, the program grew to serve 367 children. Approximately 98% of program participants are ethnic minorities (African-American, Latino, Asian, and/or mixed race).

Research proves that children who receive music education early in life develop improved language, thinking, learning, and social skills. *The time from birth to age 3 is crucial to early childhood development.*

Children learn age appropriate basic musical concepts through singing, listening, playing rhythm instruments, and moving to music. They develop motor and sequencing skills in addition to learning how to take turns, share and concentrate as they acquire an appreciation for music



“The Conservatory of Music offers the children in Head Start an exposure to a variety of musical instruments ... [and] experiences that involve expression and art. Music has helped our children sense motion and develop their self-concepts and motor coordination skills through rhythmic songs and activities.” – Marshell Collins, Urban Day School Administrator

Partnership with Boys & Girls Clubs of Milwaukee

We are very proud of our growing partnership with Boys & Girls Clubs of Greater Milwaukee. The Conservatory provides programs such as a children’s chorus, African and bucket drumming (including choreography), music composition, keyboard, computer music classes, and more. The Conservatory provides instructors, curricula, performance materials, conductors, accompanists, and instruments, the Boys & Girls Clubs provide classroom space and support, and the kids bring their enthusiasm and talent! In spring and summer 2010, our Boys & Girls Club partners included the **Roger and Leona Fitzsimonds, North Division High School** and **St. Joan Antida High School Clubs**.



Milwaukee Public Schools Partnership for the Arts

We are very proud to be one of the MPS district’s largest arts education partners. In 2009-2010, we were awarded \$70,000 to provide individual instruction scholarships, a middle school band camp, the MPS Summer Music Center Program, and a new Afro-Caribbean ensemble program.

“Being a child of a single parent recently laid off, I can only share my experience on what a privilege it was to be accepted as a recipient of [the] private lessons scholarship program at the Conservatory of Music... superior instruction has helped enhance my music abilities in the areas of auditions and performances by improving technique and skill levels.”

– Student, Age 17, MPS Milwaukee High School of the Arts, Private Lesson Scholarship recipient

“This program is great because you get experience of music and it gives you more history of music.” – Student, Age 9, Elm Creative Arts, 2010 MPS/WCM Summer Music Center

“I feel that this program gave the opportunity for the students I worked with to get some individual attention on their instrument, which they were in much need of. They became enthusiastic about learning more and were encouraged by their own achievements.”

– WCM Faculty Instructor, MPS Middle School Band Camp

Jazz Institute

The Conservatory Jazz Institute was created to offer high quality individual instruction, classes, combos, and camps, taught by seasoned professional jazz musicians to students of all ages. In addition, the new Jazz Institute provides more scholarships for jazz; presents internationally renowned jazz artists in performances and master classes; provides performance and recording opportunities; and offers in-school jazz residencies in Milwaukee area schools.

The launch of the Jazz Institute has generated a tremendous amount of excitement in our community and partner schools! On May 6, the Conservatory Jazz Institute presented the legendary Charles McPherson with Grammy Award-winning artist and Conservatory alumnus Brian Lynch for a Jazz Institute Kick Off concert with the We Six Trio. Jazz Honors combo students also performed at Gathering on the Green on July 8 and at Jazz in the Park on June 24 with We Six.



The Wisconsin Conservatory of Music’s Jazz Institute is supported by the Eric D. Batterman Memorial Grant.

At the Conservatory

Lessons, Classes and Ensembles

Whether transitioning from early childhood classes, trying music lessons for the very first time as a child, youth or adult, preparing for college scholarship auditions, or honing skills from entry to professional level, the Conservatory's expansive range of lessons, classes and ensembles provide challenging curriculum that promote sequential growth. In 2009-2010, the Conservatory and **97 faculty members served 1,894 unduplicated students** through our individual lessons, classes, ensembles, and summer camps at our three branch locations in Milwaukee, Fox Point and Brookfield.

Combos and ensembles for teens and adults motivate, improve performance, listening and teamwork skills, and create opportunities to interact and make new friends. Ensembles are offered in a wide variety of musical styles.



“As a young teenager, I discovered the joys of chamber music ensemble instruction. It was an incredible incentive to improve! Today, teaching and performing chamber music at the Conservatory is my profession. Introducing young people to the intricacies of chamber music is a richly rewarding experience.”

– Stefanie Jacob, Conservatory faculty member, piano; and founding member of the Conservatory's resident piano trio, Prometheus Trio

Conservatory Summer Camps

The Conservatory's Summer Music Camp program for students in grades 1-12 provides opportunities for intensive music instruction and performance. At every skill level, lessons are learned and new friends are made in a joyful, caring environment. Our Summer Camp partners include the **Urban Ecology Center**, the **Milwaukee Art Museum**, the **Sharon Lynne Wilson Center**, and **Danceworks**. 284 students attended one (or more) of 16 summer camps.

Tuition Assistance (Scholarships and Financial Aid)

With grateful thanks for the community's support, we were able to provide opportunities for eligible students to receive music instruction at reduced cost. Merit-based scholarships are awarded each April through a competitive audition process. Financial aid is made available for current and new students throughout the year as funds allow. Award levels are based on federal guidelines for low-income status.

135 students participated in the annual merit scholarship competition and **62 received awards** for use in 2009-2010, while **54 students received financial aid awards**. An additional 42 students received free music instruction through the MPS Partnership for the Arts program.



Concerts

In 2009-2010, 9,060 people had the pleasure of partaking in a Conservatory faculty or student concert.

We presented 36 concerts as part of our Conservatory Nights, Conservatory Sundays, Prometheus Trio, We Six, and Philomusica String Quartet Series. A new concert series, 'Round Midday, offered jazz piano performances during the lunch hour on the first Friday of each month. Average attendance for Conservatory concerts was 93% of capacity.

On May 6, 2010, the Conservatory welcomed jazz great Charles McPherson and Grammy Award winning artist and Conservatory graduate Brian Lynch for two performances and master classes for area jazz students.



“The players [Prometheus Trio] balanced the melodic and harmonic complexities of the moody piece [Schumann Trio No. 3] in a deeply stirring performance. They balanced sounds and interpretations, handing phrases from one player to another in like-minded music making.” – Elaine Schmidt, Journal Sentinel, December 7, 2009

“The Philomusica brought a rough, edgy sound – worlds apart from the beauty they lavished on Villa-Lobos – to Ginastera's 1949 quartet. That was just right, as was their lusty, hell-for-leather reading of this virtuosic rave-up.”

– Tom Strini, Third Coast Digest, November 8, 2009



In the Pursuit of Healing

Because music is often associated with positive personal life events, it is a uniquely effective tool to stimulate memory and create a hospitable, nurturing atmosphere that encourages learning and achievement. Music Therapy has proven to be highly effective with individuals suffering from cognitive (logic and reasoning), physical, developmental, emotional, or medical disabilities, including:

- Alzheimer's disease
- Anxiety disorders
- Anger management
- Autism spectrum disorders
- Blindness
- Depression/Isolation
- Downs Syndrome
- Pain management
- Parkinson's disease
- Recovery from accidents
- Speech development in children
- Recovery from stroke

“Many of my students are functionally non-verbal so music is one area where they can shine. Since processing music requires both sides of the brain to work together, it is effective in promoting their language development and speech functioning. We are working on patterns in math right now and the music therapy times are reinforcing our math activities. I am so grateful for the opportunities the therapists from Wisconsin Conservatory of Music are providing for my students here at Emerson!”

— Julie Kane, Special Education Early Childhood teacher, Ralph Waldo Emerson K3-5, MPS District

Each Music Therapy program is customized to address and alleviate specific challenges. The needs of an autistic child, for example, may be very different than those of a teen in a psychiatric facility, or a deaf, otherwise healthy senior citizen suffering from intensive isolation due to her or his disability.

Music Therapy has been shown to facilitate motor development, verbalization, body awareness, cognitive development, and self expression. It also promotes wellness, manages stress, alleviates pain, and can improve communication.

In 2009-2010, WCM's overall music therapy program served 576 clients.



“Our members are the elderly, most with some level of dementia, varying from early onset of symptoms to very advanced... [In] our most recent newsletter to family, we highlighted the important role music plays in reducing our body's responses to stress. Participants experience decreased depression, significant reductions in blood pressure, heart rate and respiratory rate.”

— Renee Holcomb, R.N., The 1022 Club, Aurora Medical Center—Hartford

WCM partnered with 14 health and human services organizations to bring music therapy to clients in the greater Milwaukee area and in Racine, Ozaukee, Waukesha, and Washington Counties. WCM music therapists are a vital presence in schools, camps, senior care centers, adult day cares, senior housing, and retirement facilities throughout southeastern Wisconsin.

The Conservatory's Music Therapy partner agencies in 2009-2010 included:

American Music Therapy Association, Inc.

ARCh-Camp Pow Wow

Aurora Medical Center-Hartford Adult Day Center

Avalon Square

Goodwill Industries of SE Wisconsin

Lincoln Lutheran of Racine

Lutheran Home Adult Day Center

Milwaukee Catholic Home

Milwaukee County Disabilities Services Division

MPS Ralph Waldo Emerson School

Portal Industries of SE Wisconsin

Rose and Harry Samson Jewish Community Center

St. Camillus Health Center

Tall Oaks Residential

Wraparound Milwaukee



“My residents are elderly and live in HUD housing. They love the program. We have music therapy once a month. I have a resident who never leaves her apartment except to come to music therapy... I would personally like to thank the Wisconsin Conservatory of Music for helping keep Lincoln Villas North residents healthy and active through the therapeutic use of music to stimulate cognitive, physical, and social skills.”

— Kris Kurklis-Ohnstad, Service Coordinator, Lincoln Lutheran—Lincoln Villas North, Racine

Message from the Chair of the Board of Trustees



It was an honor to serve the Wisconsin Conservatory of Music as Chair of the Board of Trustees in 2009-2010. In these challenging times, the quality of instruction and commitment to education demonstrated daily by students, parents, faculty members, staff, and my board colleagues was truly impressive. As a result, we served more people than ever before and ended the year with a balanced budget. These were extraordinary achievements in a challenging economic environment.

Our goal in preparing the Conservatory's 2009-2010 budget was to create a business plan that placed focus on providing the highest quality music instruction available in southeastern Wisconsin, and continuing our community music education and therapy programs. This was made possible by our many donors who continue to provide us with the assurance that the work the Conservatory is doing is remarkable and worthy of continued support. It was also made possible by significant financial sacrifice on the part of the faculty and staff which continues at this time. For their continued commitment to the organization, I am most grateful.

While 2009-2010 presented many challenges, we advanced our educational mission, achieved a balanced budget, and positioned ourselves for an equally successful year ahead.

Carol Gehl
Board Chair

Wisconsin Conservatory of Music Financials as of August 31, 2010

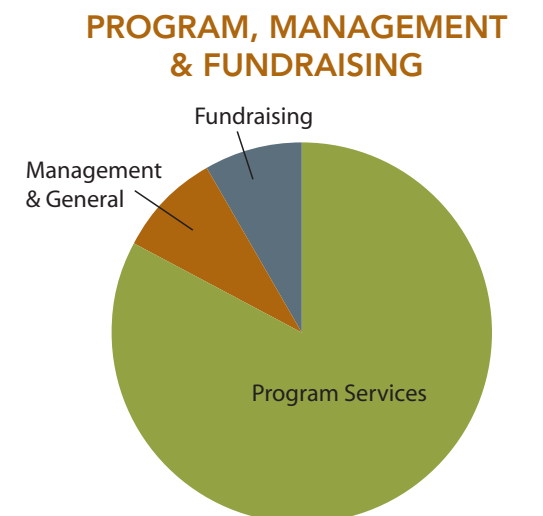
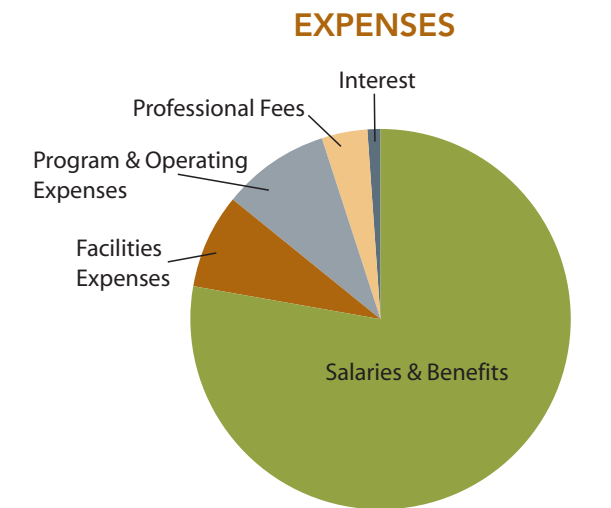
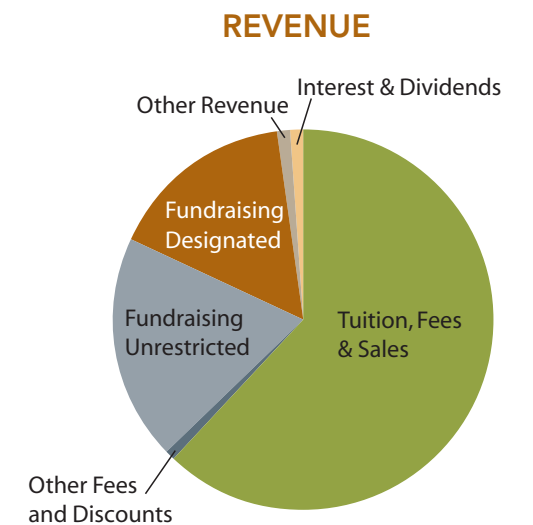
REVENUE		
Tuition, Fees, & Sales	\$1,326,317	62%
Other Fees and Discounts	\$29,951	1%
Fundraising Unrestricted	\$400,716	19%
Fundraising Designated	\$344,423	16%
Other Revenue	\$31,836	1%
Interest & Dividends	\$23,954	1%
Total Revenue	\$2,157,197	100%

EXPENSES		
Salaries and Benefits	\$1,690,791	78%
Facilities Expenses	\$175,678	8%
Program & Operating Expenses	\$203,936	9%
Professional Fees	\$70,586	4%
Interest	\$15,253	1%
Total Expenses	\$2,156,244	100%

PROFIT/(DEFICIT) \$953

PROGRAM, MANAGEMENT & FUNDRAISING		
Program Services	\$1,775,033	82%
Management & General	\$200,223	9%
Fundraising	\$180,988	8%
Total	\$2,156,244	100%

Audited financial statements were prepared by WIPFLI, LLP and are available by request. The numbers above are drawn from the 2010 audit, as approved by the Board of Directors of the Wisconsin Conservatory of Music.



Donors

Key Players Annual Campaign

Our heartfelt thanks to the following donors of \$250 and greater between September 1, 2009 and August 31, 2010. We regret that there is not enough space to list all of our generous donors.

Leadership Circle \$10,000 +

Anonymous Donor
William and Carol Gehl
Katharine and Sandy Mallin
Julia and David Uihlein, Jr.
Terrence and Catherine Wilkinson
Wisconsin Conservatory Faculty and Staff

Corporate and Foundation Donors

Eric D. Batterman Memorial Grant
The Lynde and Harry Bradley Foundation
Elizabeth A. Brinn Foundation
The Marjorie L. Christiansen Foundation
Elizabeth Elser Doolittle Charitable Trusts
Greater Milwaukee Foundation
Dr. Abraham B. and Irma F. Schwartz Fund
The Richard and Ethel Herzfeld Foundation
M&I Foundation
Milwaukee County Arts Program (CAMPAC)
Northwestern Mutual Foundation
Jane Bradley Pettit Foundation
Wisconsin Arts Board

Patron \$5,000 - \$9,999

Mary C. Corcoran
Mr. Adam Dohmen and Ms. Linda Thomas
Mr. Lee P. Hackett
Mary and Sam Wann

Corporate and Foundation Donors

Anonymous Family Foundation
City of Milwaukee Arts Board
Ralph Evinrude Foundation
Greater Milwaukee Foundation
Donald and Barbara Abert Fund
Adelaide F. Banaszynski Memorial Fund
Mary C. Corcoran Music Scholarship Fund
Harley-Davidson Foundation
Dorothy Inbusch Foundation
Johnson Controls Foundation
The Bert L. & Patricia S. Steigleder Charitable Trust

Key Club \$1,000 - \$4,999

Lee Berthelsen
William and Tammy Bonifas
Mr. and Mrs. Robert Bourgeois
Greg Chrisafis
City of Milwaukee Employees
Ms. Karen Deschere
Mr. and Mrs. James Duca
John and Mary Emory
Alan and Patty Giuffre
Mrs. Judy Goetz
Edward J. Hammond and Marcia P. Brooks
Ms. Stacy Herzing
Mr. Stephen C. Hinkle
Jim and Laura Holtz
Mr. Sanford Horwitt
Ms. Mary S. Kamps
Mr. and Mrs. Arthur Laskin
Mr. and Mrs. Greg Marcus
Milwaukee Metropolitan Sewerage District Employees
Stephen and Susan Ragatz
Dr. Lucille Rosenberg
Audra and John D. Rumpf
Dr. and Mrs. Robert Saichek
Ms. Mary M. Tenwinkel
Mr. and Mrs. Ralph Weber
Mr. Wilfred Wollner

Corporate and Foundation Donors

Baird & Co. Foundation
Cramer Coil & Transformer Co., Inc.
Patrick and Anna M. Cudahy Fund
Cygniak Planning, Inc.
Data Financial, Inc.
Ralph Evinrude Foundation
Gardner Foundation
Gass Weber Mullins, LLC
Godfrey & Kahn, S.C.
Greater Milwaukee Foundation
Terry A. Hueneke Fund
Camille and Adolph G. Laubenstein Fund
Luedke-Smith Fund
William Stark Jones Foundation
Kolaga Family Charitable Trust
Marcus Corporation Foundation
Merrill Foundation
Milwaukee Jazz Experience
MGIC
The Penworthy Company

Clare M. Peters Charitable Trust
PPC Foundation
Rexnord Foundation, Inc.
Will Ross Memorial Foundation
Service Club of Milwaukee
Target Stores

Major Player \$500 - \$999

Mr. and Mrs. Robert L. Banner III
Donald and Donna Baumgartner
Mr. and Mrs. Rick Bliss
Ms. Marcia Blonder
Ms. Patricia Borger
Mr. John Byrnes
Ms. Geralyn Cannon
City of Milwaukee Community Development Employees
Dr. Matthew Connolly
Thomas and Carolyn Davies
Miriam and Matthew Fleming
Dr. Jeffrey A. Foran and Dr. Vanessa M. Barnabei
Renee Herzing and Rene Burkard
Ken and Melinda Krei
Mr. Charles S. Marn and Ms. Kathleen Hawkins
Ms. Mary Mowbray and Mr. Roland Schneider
Mr. David K. and Gail E. Nelson
Frank Neubauer
Lucia and Pete Petrie
Ms. Sue Ellen Readinger
Sunny Schauer
Rose E. Spang
Mr. and Mrs. Jay L. Sorensen
Paula and Vance Strother
Mr. and Mrs. Kurt Thomas
Mr. and Mrs. Larry Totsky
Paul and Patricia Vogelsang
Dr. Travis Webb
Mr. Benjamin Zabor
Herb Zien and Linda Levins

Corporate and Foundation Donors

Constance P. Godfrey 2004 Trust
Greater Milwaukee Assoc. of Realtors Youth Foundation, Inc.
Herbert H. Kohl Charities, Inc
Camille A. Lonstorf Trust

Principal Player \$250 - \$499

Anonymous Donor
Mr. and Mrs. Al Altman
Mr. and Mrs. F. Michael Arnow
Mr. and Mrs. James Barry Jr.
Mr. and Mrs. Steven Booth
Lucile Cohn
Mr. William Eastham
Mr. and Mrs. Russell Eisenberg
Ms. Jennifer Engel
Mr. and Mrs. Laurence Hammond
Mr. William Hartzel
Ms. Mary E. Hauser
Mr. and Mrs. Jeffrey Heeren
Mr. and Mrs. David Hildeman
Mr. and Mrs. Fred Jacob
Mr. Peter Joneth
Mary and Ted Kellner
Valerie Kensler
Ms. Cathi Kissinger
Mr. and Mrs. Martin Krebs
Ms. Helge K. Lee and Ms. Linda Lee
Mrs. Jane A. Matheus
Ms. Elizabeth McManus
Milwaukee Public Museum Employees
Mr. John Moha
Yannique Purlman
Ms. Marynell Regan
Ms. Martha Rogers
Mr. and Mrs. Michael Schmitz
Mr. Christopher Schultz
Ms. Carol Schwartz
Mr. and Mrs. Jason Steigman
Mr. Ronald Taylor
Mr. Peter Topczewski
Mr. and Mrs. Jim Tynion
Dr. Antoinette M. Walter and Mr. Kenneth R. Walter
Dr. and Mrs. David Zersen

Corporate and Foundation Donors

Butler Tool Incorporated

Endowment Fund Donors

Mr. and Mrs. Henry Herzing
Mr. Joseph Pollack

These permanent named funds within the Endowment Fund provide ongoing support to our students and programs. A special thanks to those listed below.

Joyce Altman Operating Fund
Norbert Beihoff Scholarship Fund
Johann and Helenya Berthelsen Voice Scholarship Fund
Elaine Bliss Piano Scholarship Fund
Gales Scholarship Funds
Bonnie Dent Grass Piano Scholarship Fund
Margaret Hawkins Choral Fund
Mary Horwitt Piano Scholarship Fund
Dorothea Mayer Scholarship Fund
Esther Pollack Memorial Scholarship Fund
Frances N. Roosa Voice Scholarship Fund
Marlee Sabo Voice Scholarship Fund
Shirley Saichek Memorial Scholarship Fund
LeRoy and Henrietta Umbs Piano Scholarship Fund



Board and Staff*

BOARD OF TRUSTEES

Carol A. Gehl, Chairman
James A. Holtz, Vice Chairman
James F. Duca, Treasurer
Kurt J. Thomas, Secretary
William H. Bonifas, Past Chairman

Robert L. Banner III
Patricia Borger
Robert C. Bourgeois
Elizabeth L. Elser
Miriam Fleming
Michael Ford
Alan Giuffre
Edward J. Hammond
Katharine A. Mallin
Gregory Marcus
Robert G. Petrie, Jr.
Glen Ponczak
John D. Rumpf
Mary Alice Wann
Ralph Weber
Terrence R. Wilkinson
James A. Wolter

TRUSTEES EMERITUS

Marianne H. Epstein
Terry A. Hueneke
Vel Phillips

CHAIRMAN'S COUNCIL

Mary B. Emory
Linda B. Farkas
Carmen Haberman
Lee Hackett
Terry A. Hueneke
David J. Lubar
Robert G. Petrie, Jr.
David V. Uihlein, Jr.
Les Weil

CONSERVATORY STAFF

President & CEO
Karen Deschere

Conservatory Connections
Maxon Day, Director

Development
Kristie Minnickel, Vice President
Brenda Hughes, Corporate & Foundation Manager
Karen Williams Brusabardis, Development Assistant

Education
Barbara Henry, Director
Jonathan Moberg, Piano Technician

Finance
Linda Neitz, Financial Associate
Suzanne Hanks, Financial Consultant

Library
Raymond Mueller, Librarian

Marketing
Angela Morgan, Marketing & Events Manager
Clear Verve Marketing

Music Therapy
Bonnie Jean Barczak, Director
Karen Darga, Coordinator

Student Services
Rachel Fritz, Manager
Josh Cameron
Elise Pennington
Scott Schmidt, Assistant

Facilities
Donald Williams
Greg Darga

*As of August 31, 2010



Conservatory Faculty**

EARLY CHILDHOOD

Elise Pennington* Dept. Chair
Karen Darga
Joshua Tice*
Nathan Wasselowski

GUITAR & BANJO

Matthew Schroeder - fingerstyle, blues, rock, Dept. Chair
Peter Baime - flamenco
Jason Behr* - Suzuki, rock, classical
Thomas Clippert - classical
Benjamin Kammin* - fingerstyle
George Lindquist - classical
Mikhail Litvin - mandolin
Raymond Mueller - classical
Colin O'Brien - banjo, folk
Paul Silbergleit* - jazz

JAZZ

Mark Davis* - piano, Dept. Chair
John Babbitt - bass
David Bayles* - drums
Jamie Breiwick - trumpet
Maurice Cotton* - piano, voice
John Foshager - piano
Berkeley Fudge - saxophone, flute
Aaron Gardner* - saxophone, flute
Jeff Hamann - bass
Eric Jacobson* - trumpet
Jim Paolo - bass
Lynn Roginske - piano, voice
Paul Silbergleit* - guitar

MUSIC THEORY

John Babbitt - music history, aural skills, theory
Max Day* - conducting, improvisation
Michael Ferraro - theory
Steve Grimm - songwriting
Tatiana Migliaccio* - theory
Daniela Pardo - theory*

RECORDING / MUSIC TECHNOLOGY

Kevin Arndt - recording
Jordon Lee - turntablism
Trevor Sadler - recording

RECORDING ENGINEERS

Jim Griffith
Jacques Sewrey

MUSIC THERAPY

Bonnie Jean Barczak* - Dept. Chair
Kim Bartlett
Jan Brandes
Kate Craney-Welch
Karen Darga
Pat Kaiser
Kathryn Rambo
Kerry Ramthun
Christine Wiggin

PIANO

Teresa Drews* - Dept. Chair
Steven Ayers
Matthew Bergey
LaRita Craft*
Andrea DeGreiff-Beisser
Rachel Fritz*
Barbara Henry
Stefanie Jacob
Janina Knechtges*
Sue Medford
Fumi Nishikiori
Linda O'Brien*
Kerry Ramthun
Diana Shapiro*
Curtis Stotlar
Michael Thiele

STRINGS

Daniela Pardo* - violin, viola, Suzuki coordinator, Dept. Chair
John Babbitt* - bass
Michael Ferraro - cello
Phillip Grossman - violin
Joe Ketchum* - violin, viola
Timothy Klabunde - chamber music
Korinthia Klein - violin, viola
Alexander Mandl - violin
Tatiana Migliaccio* - violin
Elisa Mon Garcia* - violin, viola
Tahlia Morris - harp
Laura Rooney* - violin, viola
Julie Bamberger Roubik* - violin, viola
Jared Snyder* - cello
Scott Tisdell - chamber music

WOODWINDS/ BRASS/ PERCUSSION

Maxon Day* - trombone, euphonium
Dept. Chair
David Bayles* - percussion
Jamie Breiwick - trumpet
Nancy Cline* - French horn
Wayne Cook - trumpet
Robert Figueroa - percussion
Jahmes Anthony Finlayson* - percussion
Aaron Gardner* - saxophone, flute
Eric Jacobson* - trumpet
Linda Jones* - clarinet
Daniel Kirkpatrick* - percussion
Karli Larsen* - oboe
Carol Meves - flute
Amber Oosterwaal - bassoon
Bony Plog-Benavides - percussion
Anthony Ramirez* - percussion
Joshua Sherman - percussion
Terry Smirl - percussion
Amy Leigh Taylor - flute

VOICE

Marlee Sabo - Dept. Chair
J. Mark Baker
Jenny Gettel*
Kathleen Matts*
Phillip Pearl
Robin Pluer
Kathleen Sonnentag
Jack Forbes Wilson (musical theater coach)

CONSERVATORY CONNECTIONS

Jamey Buencamino - guitar
Greg Garcia - trumpet
Matt Liban - percussion
Cecilio Negron Jr. - Afro-Cuban drumming
Julio Pabón - general music

*Faculty members who teach at Conservatory Connections sites.

**As of August 31, 2010

Fast Facts

- 1,894 students at three branch locations
- 4,320 students at 34 Conservatory Connections sites
- 576 clients at 14 Music Therapy sites
- 4,086 students attended In-School Concerts
- 9,060 people attended concerts in the Conservatory's Helen Bader Recital Hall
- 97 faculty members
- 13% of our students are 5 years old or younger
- 29% of our branch-based students are adults
- Our students come from 339 zip codes
- 114 students received merit scholarships
- 64% of income is from tuition and fees
- 51,000 recordings, scores and books in the library

Our mission is to provide the finest musical education and performance opportunities to aspiring professional musicians and anyone else desiring cultural enrichment and self fulfillment.



1584 N. Prospect Avenue | Milwaukee, WI 53202 | 414/276-5760 | wcmusic.org

Call click or visit!